

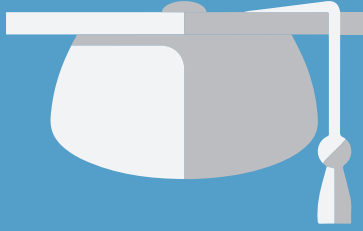
COMMUNITY VISIONING RESULTS

1,387 students, staff, community members and alumni gave us valuable input. Here's what we learned . . .



COMMUNITY ENGAGEMENT

- 91% indicated the quality of education provided by Midway ISD is excellent or good.
- 67.45% agreed or strongly agreed that Midway ISD provides opportunities for stakeholders to actively participate in the school district.
- 89% rely on email as primary source of communication from Midway ISD.
- 75% stated that students learn in partnership with home, community and district.



STUDENT ACHIEVEMENT

- Student achievement should be measured by the following criteria:
 - 1st: Graduation Rates
 - 2nd: Report Card Grades
 - 3rd: Post HS Enrollment in Higher Ed or Trade School
- 80% believe that communication skills are the most important academic skill.
- 77% believe work ethic and 76% believe respect for others is the most important social skills.



FUNDING PRIORITIES

- The top four funding priorities should be:
 - 1st: Academic Programs
 - 2nd: Safe & Secure Facilities
 - 3rd: Appropriate Class Size
 - 4th: Competitive Staff Salaries
- 64% indicated it is very important to align resources to student achievement.
- 76% indicated that it is very important to provide extracurricular programs.



FACILITIES

- 66% of participants believe Midway ISD schools are at least somewhat overcrowded.
- The highest percentage indicated a preference to build a second high school; however, it was closely followed by the options of a 9th grade center or career/tech campus to keep campus size at the desired level.
- The majority indicated a preference to build a second middle school.

SETTING GOALS FOR THE ROAD AHEAD

How do we turn input into action? Teams of administrators worked through the data supplied by the community to create multi-year goals, including:

- Cultivate creativity, communication, collaboration, and critical thinking to maximize student learning.
- All students will graduate postsecondary ready.
- Increase communication to non-parent tax payers to develop a better-informed community.
- Facilitate involvement with community partners to strengthen the community-school relationship.
- Explore additional and maximize current funding opportunities.
- Work to educate the need for legislative support of public schools.
- Effectively explain school finance and how MISD efficiently manages current resources to the community.
- Develop long-term vision to address student growth, ensuring equitable facilities across the district.
- Provide safe, clean and modern facilities that contribute to the success of faculty, students, and other staff.

Visit <http://www.midwayisd.org/momentum> for the full report.